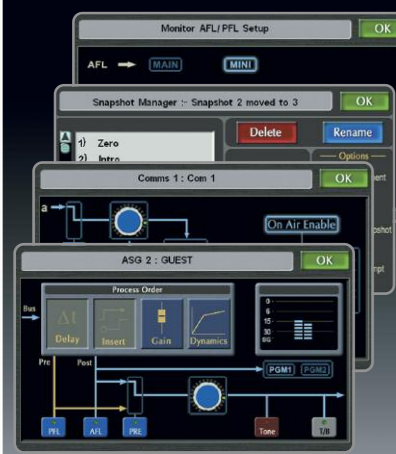


Intuitive Touchscreen Control

The central touchscreen provides permanent, simultaneous metering of all output feeds and additional input resources, plus access to configuration tools. All outputs have integral tone and talkback injection, with signal level bargraph, output gain indication, and bus name tag for each. In addition, any output bus may be fader-controlled.

Dynamic display area changes according to selected function



ASG busses provide 8 stereo, or twin 5.1 plus twin stereo group busses, with dynamics gain reduction meter and PGM routing indicators

24 pre/post Aux busses allow stereo linking between pairs, or mono use and advanced aux to fader features

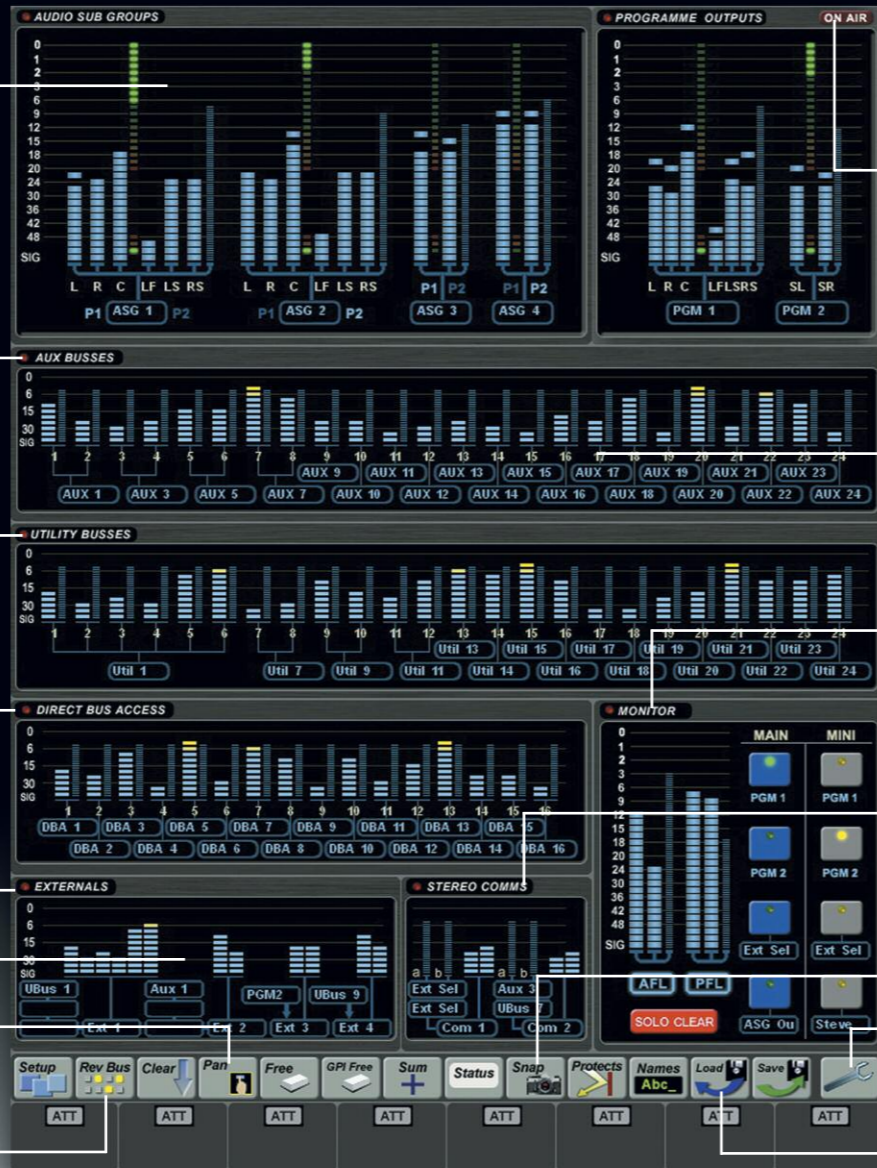
24 Utility busses provide additional 5.1, stereo or mono IFB, record and submix capability

16 Direct Bus Access (DBA) inputs allow injection of signal to any and all busses, for submix inputs, FX returns or comms injection

Four external selectors each have 12 inputs and provide fast switching for monitor loudspeakers, headphones etc. in 5.1 and stereo

Touch Pan provides fast and precise 5.1 pan positioning

Reverse Bus feature allows overview and control of channel contribution to selected bus



PGM outputs provide 2 outputs in stereo and/or 5.1, with dynamics gain reduction meters and simultaneous stereo and mono downmix feeds

The ON AIR indicator is driven from internal 'Mic Live' logic or triggered externally. It may also be signalled through any GPI output

Active talkback is indicated by busses turning green, and active tone is indicated by busses turning red, for immediate visual feedback

The Monitor section shows activity, gain and signal levels for the stereo AFL and PFL busses, plus 4-way source selectors for both main 5.1 and mini stereo loudspeakers

2 stereo Comms mixers combine dual stereo inputs and have an auto-mute function that may be triggered by the On-Air logic, for studio loudspeaker applications

Additional functions including Snapshot reset, bus naming and Free button assignment

The 'Spanner' icon leads to diagnostics and system setup

Direct Load and Save functions for the easy access to console set ups



NFL Films - USA

"SSL consoles are designed from the end user point of view making our transition from analogue to digital easy"

Rich Markowitz
Director of Audio Engineering



Golf Channel - USA

"Once our engineers have programmed in the settings for one of our internal productions, we can take that Preset and apply it to any of the three consoles. This gives us huge flexibility for scheduling multiple productions."

Ken Botelho
Senior Director of Engineering